

Alex W, Josh DB, Tyler O, Cassilyn P, Bethany D

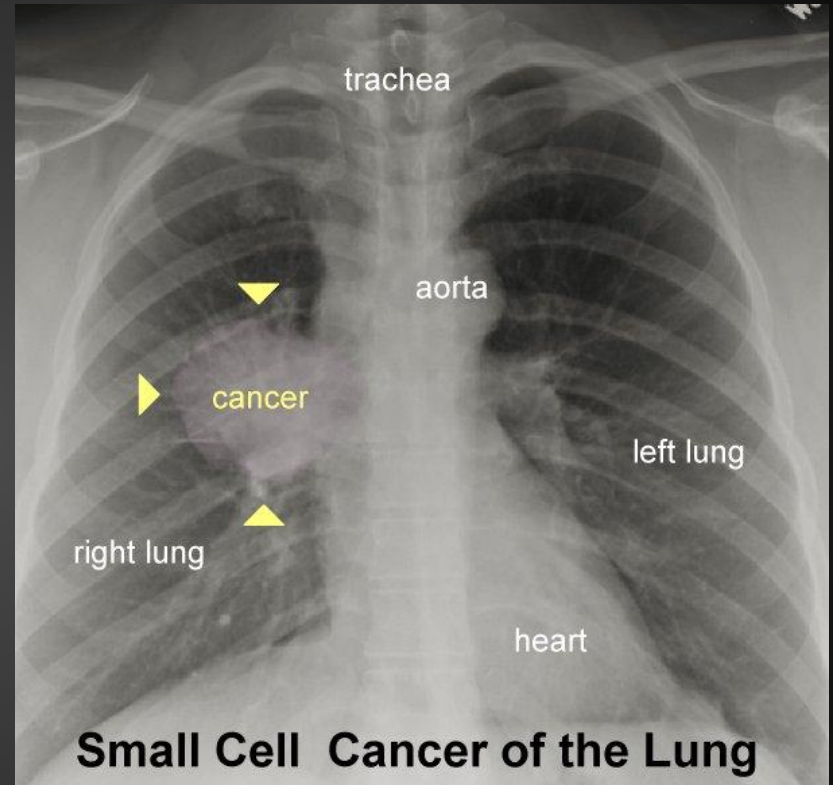
Warm-Up Question:

What types of cancer do you know of, and how have they affected family members, if any?

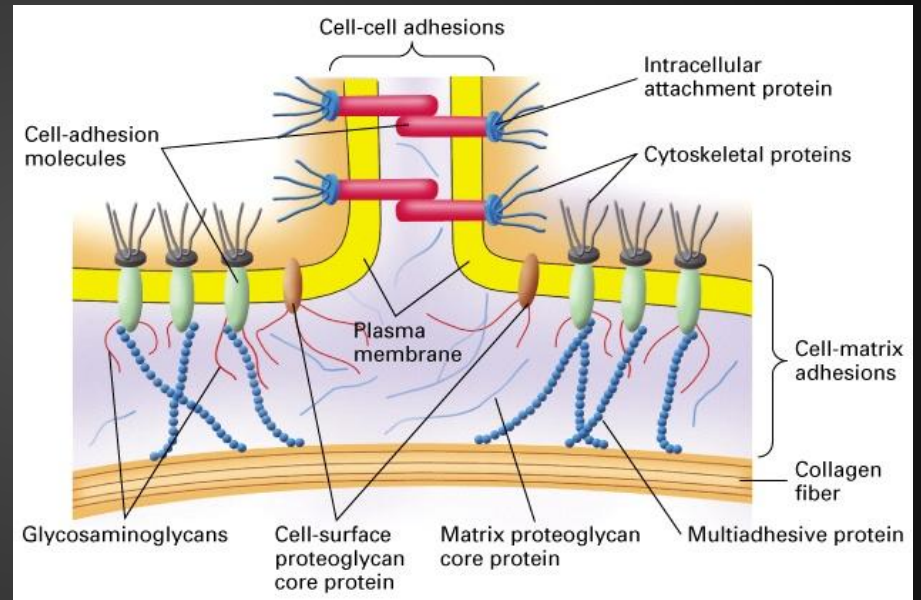
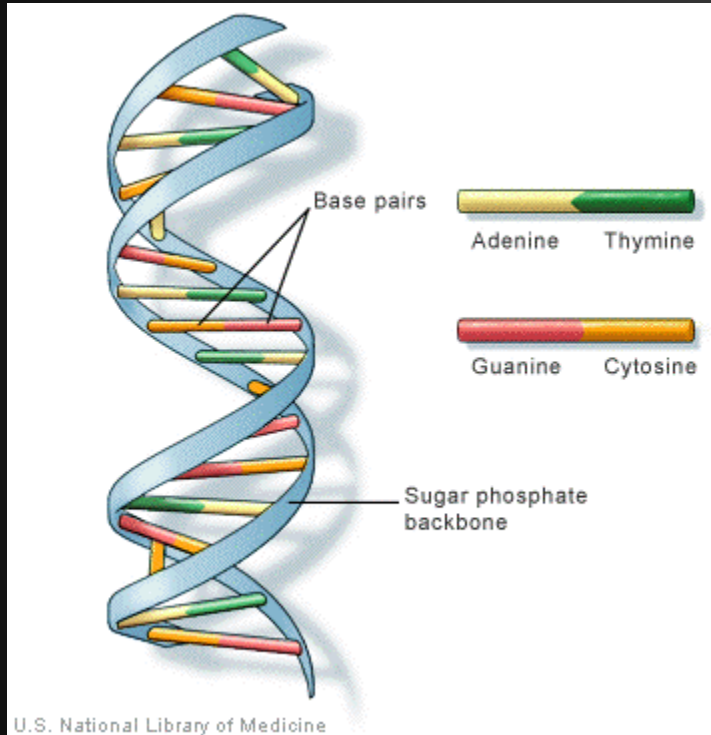


What is Cancer?

Cancer is when damaged cells in a body divide uncontrollably forming masses of tissue called tumors.

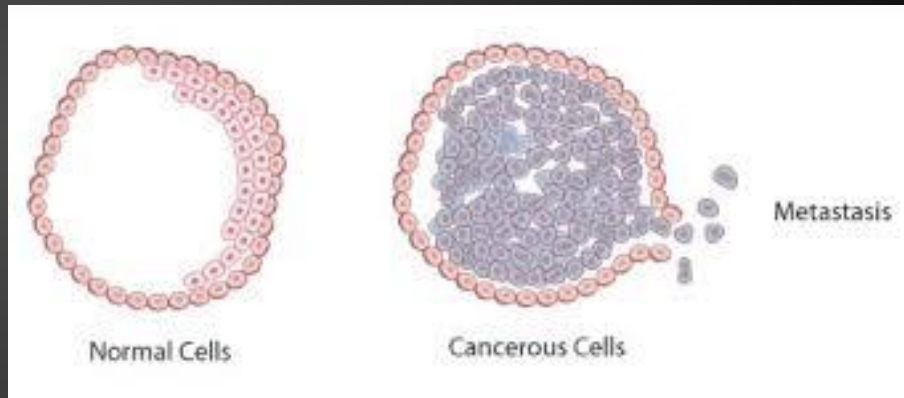
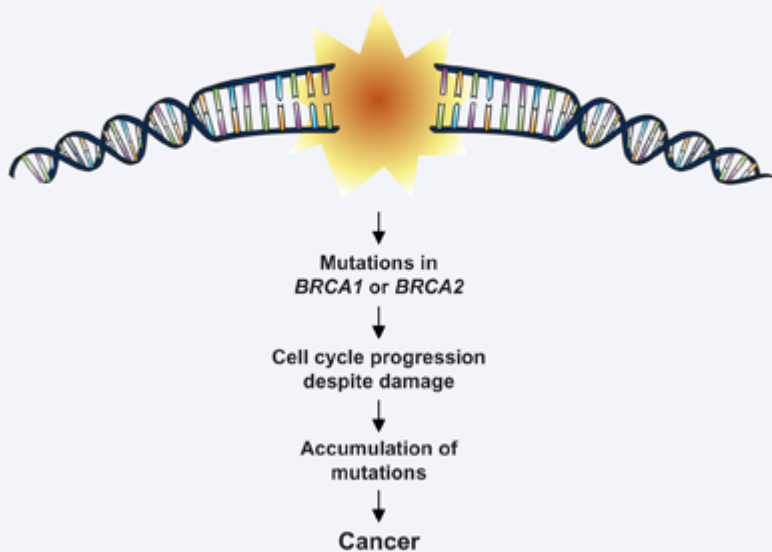


Macromolecule of Life

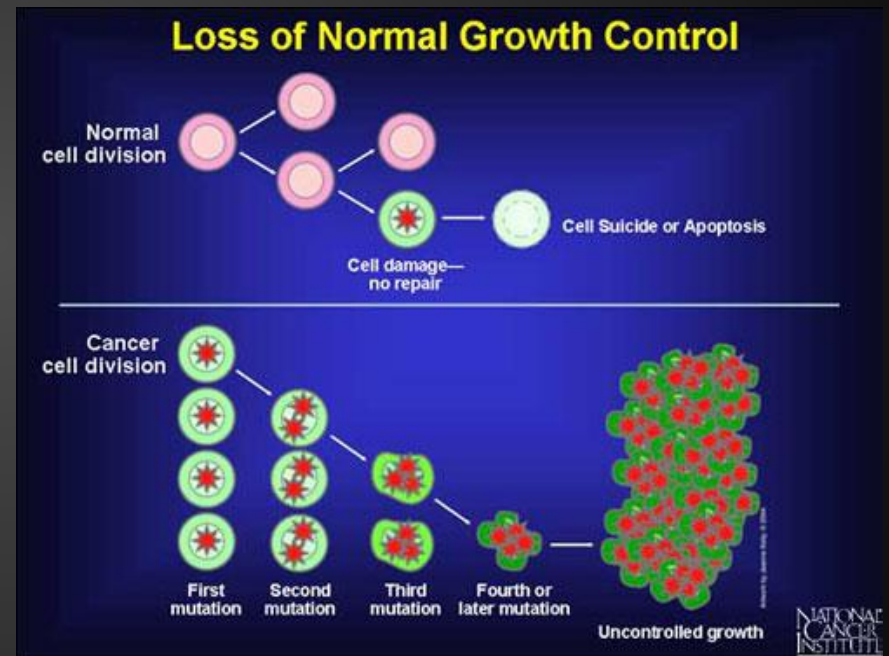
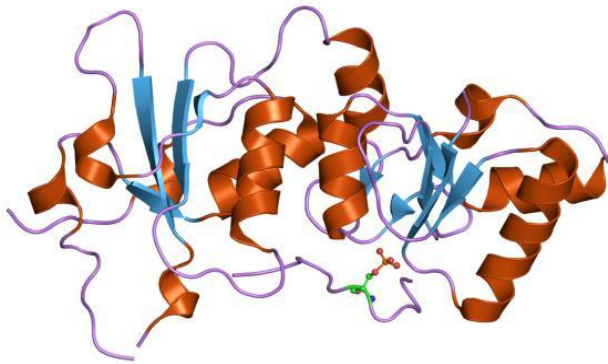
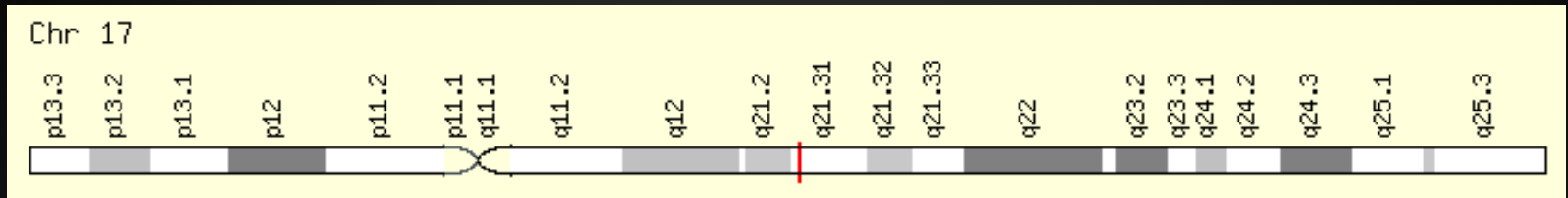


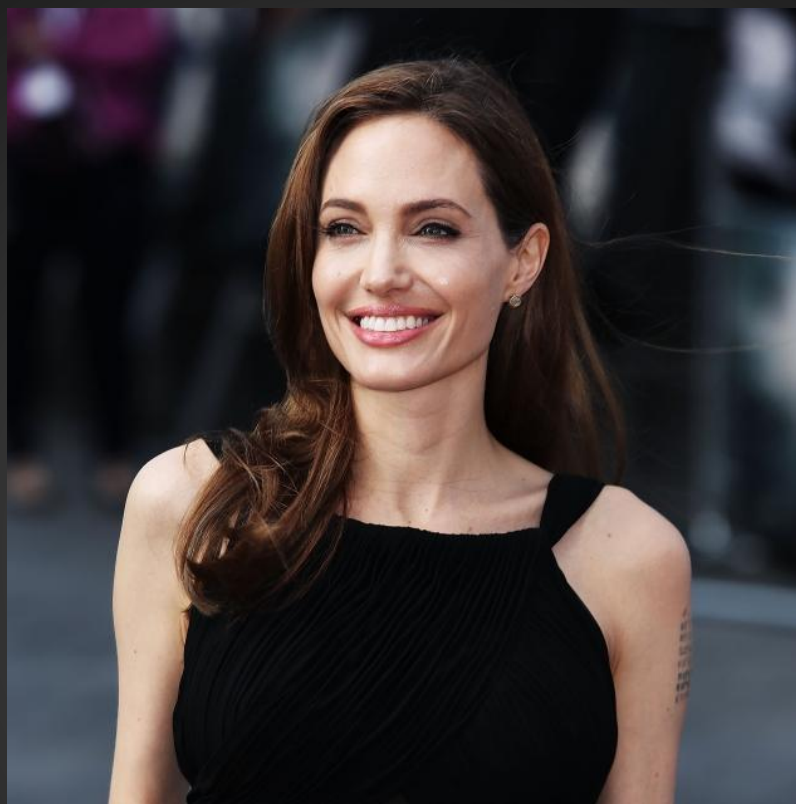
Molecules and Cancer

Figure 5. Genome instability and mutation²



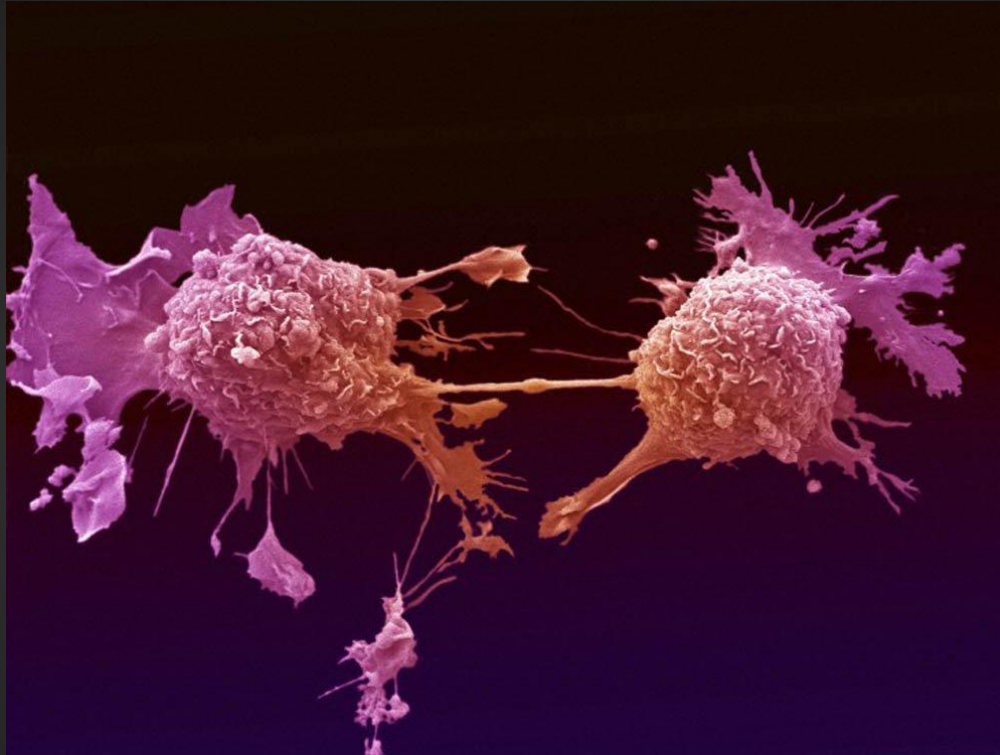
Continued...





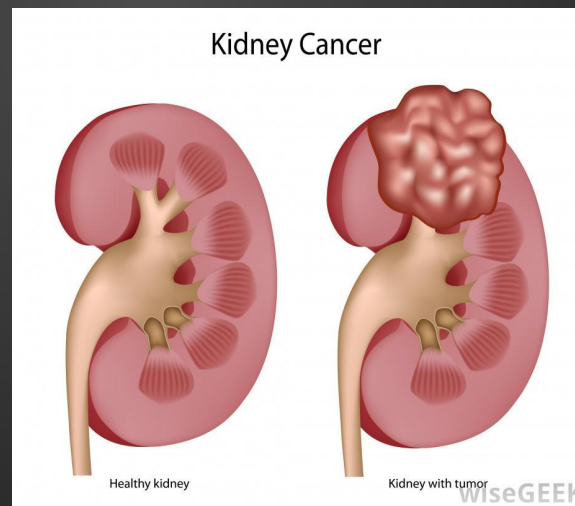
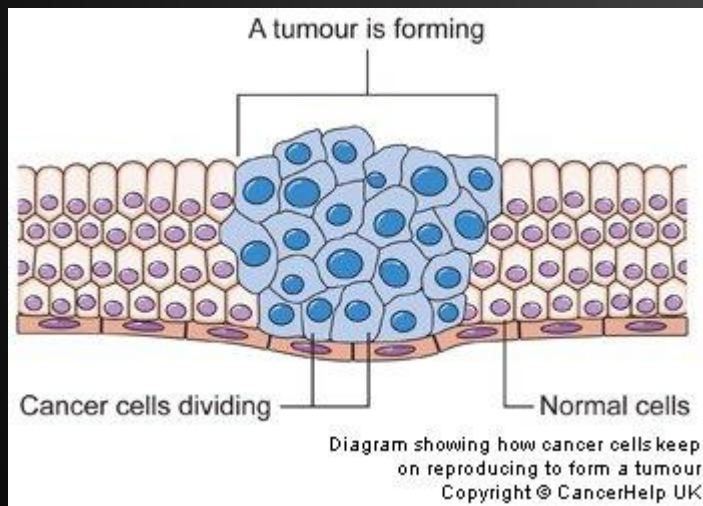
What actually happened?

Cancer's effects on cells

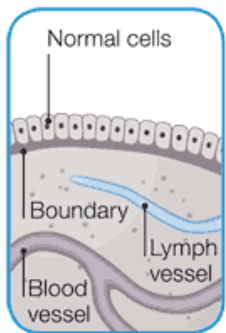
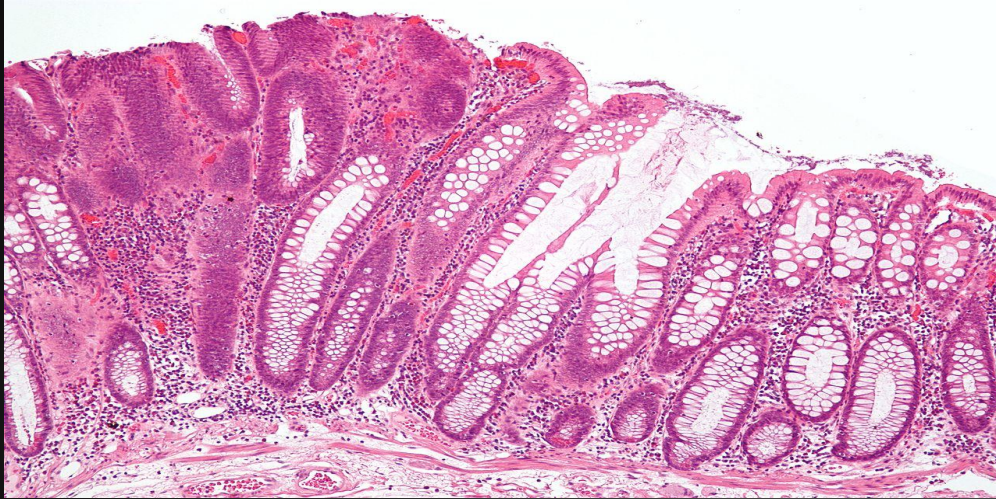


Cancer's effects on cells cont.

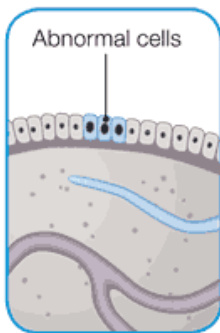
As with normal cells, cancer cells divide, but group up, creating a tumor in the tissue.



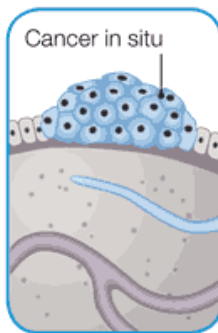
Cancer's effect on tissue



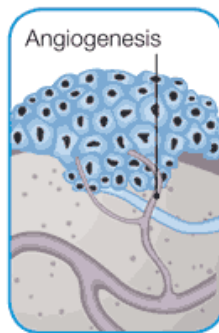
Normal cells



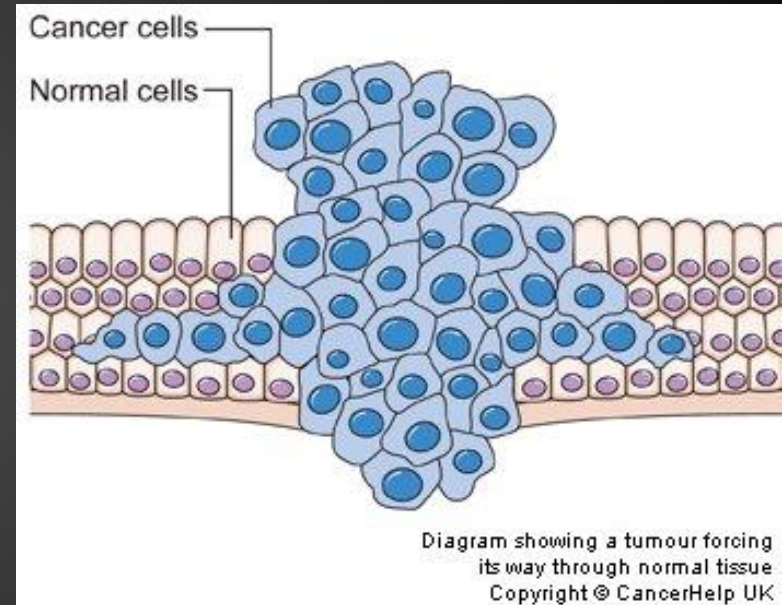
Abnormal cells



Abnormal cells multiply



Malignant or invasive cancer



Something to take away...

Self advocacy

- Taking care of your body and understanding risks

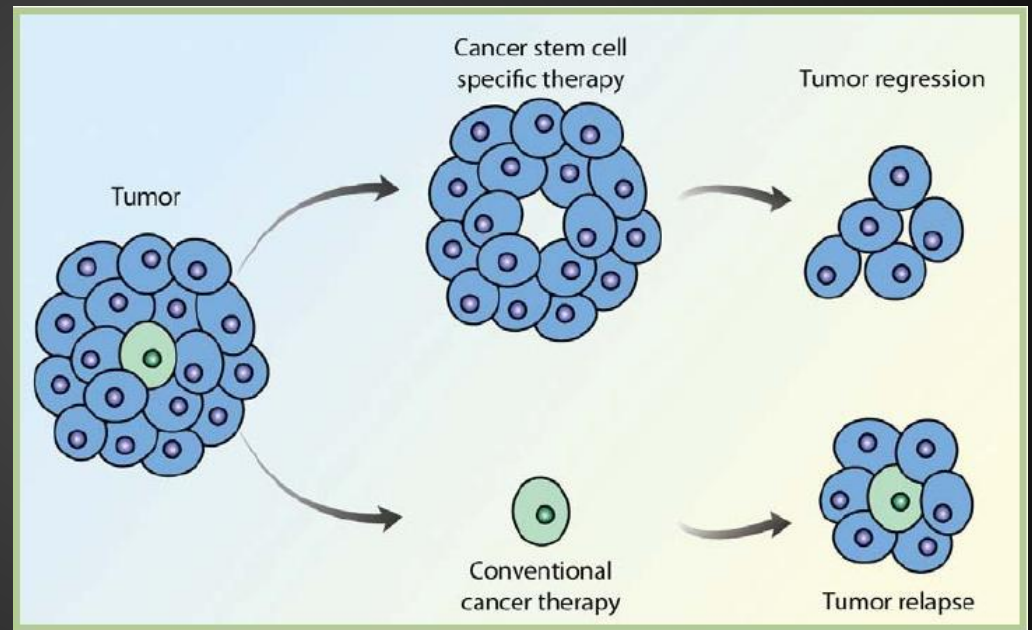
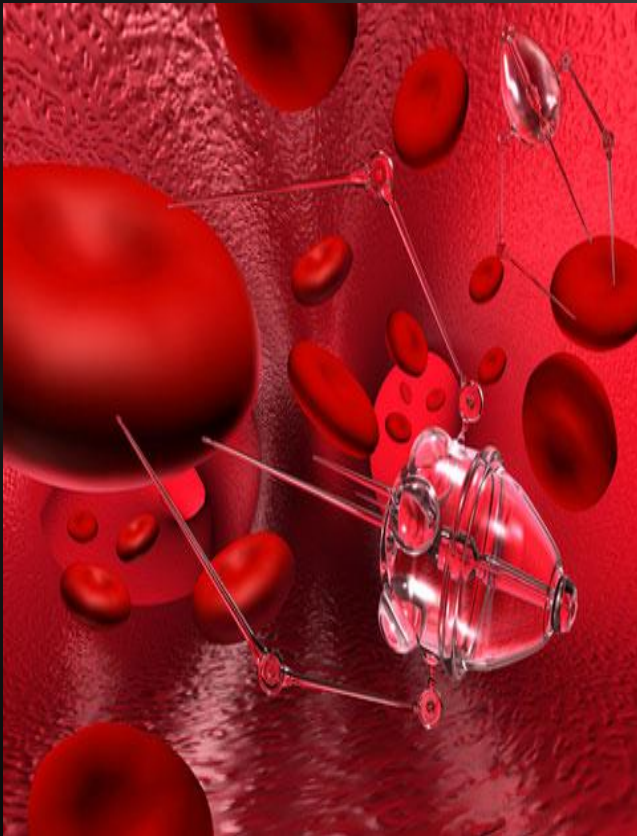
Early detection

- If you may be at risk, have check-ups

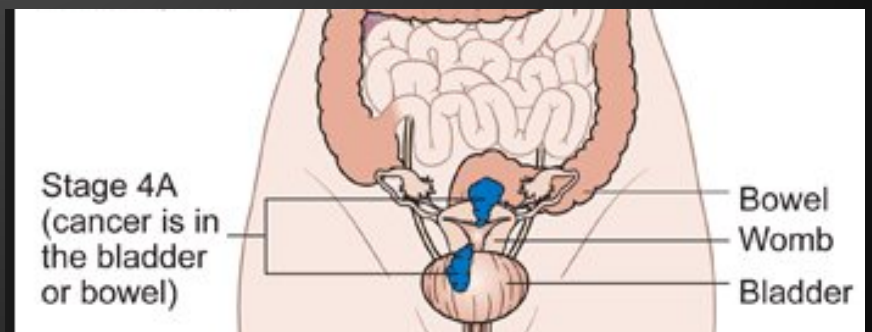
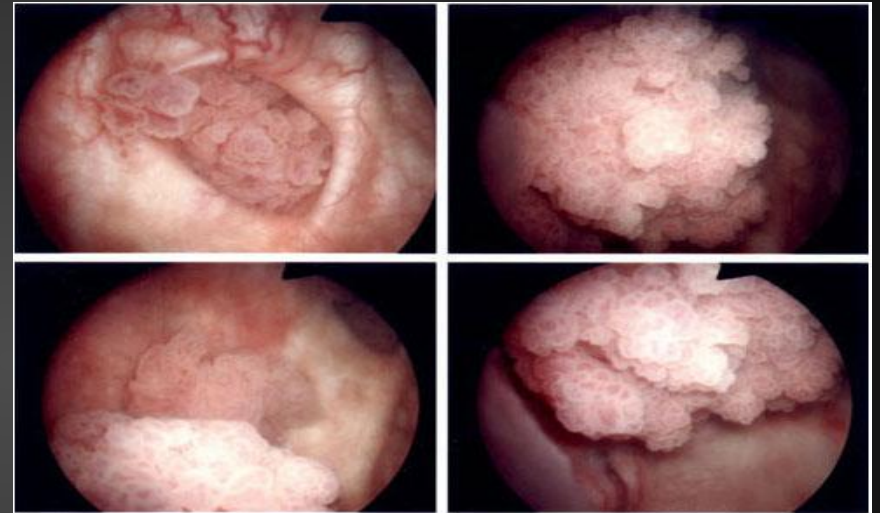
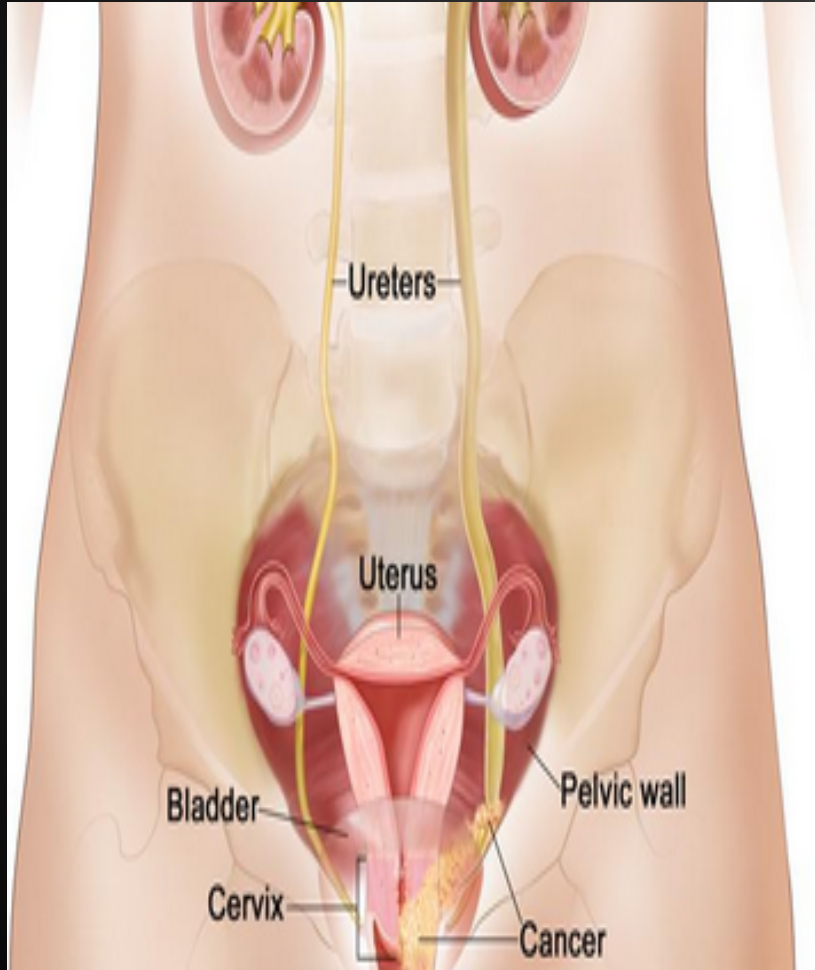


We are getting there, but we aren't there yet.

Current research



Current Therapies



Tips for preventing cancer





Sources:

American Cancer Society®

<http://www.cancer.org/acs/groups/cid/documents/webcontent/003061-pdf.pdf>

The cancer cell. (n.d.). Retrieved from <http://www.cancerresearchuk.org/cancer-help/about-cancer/what-is-cancer/cells/the-cancer-cell>